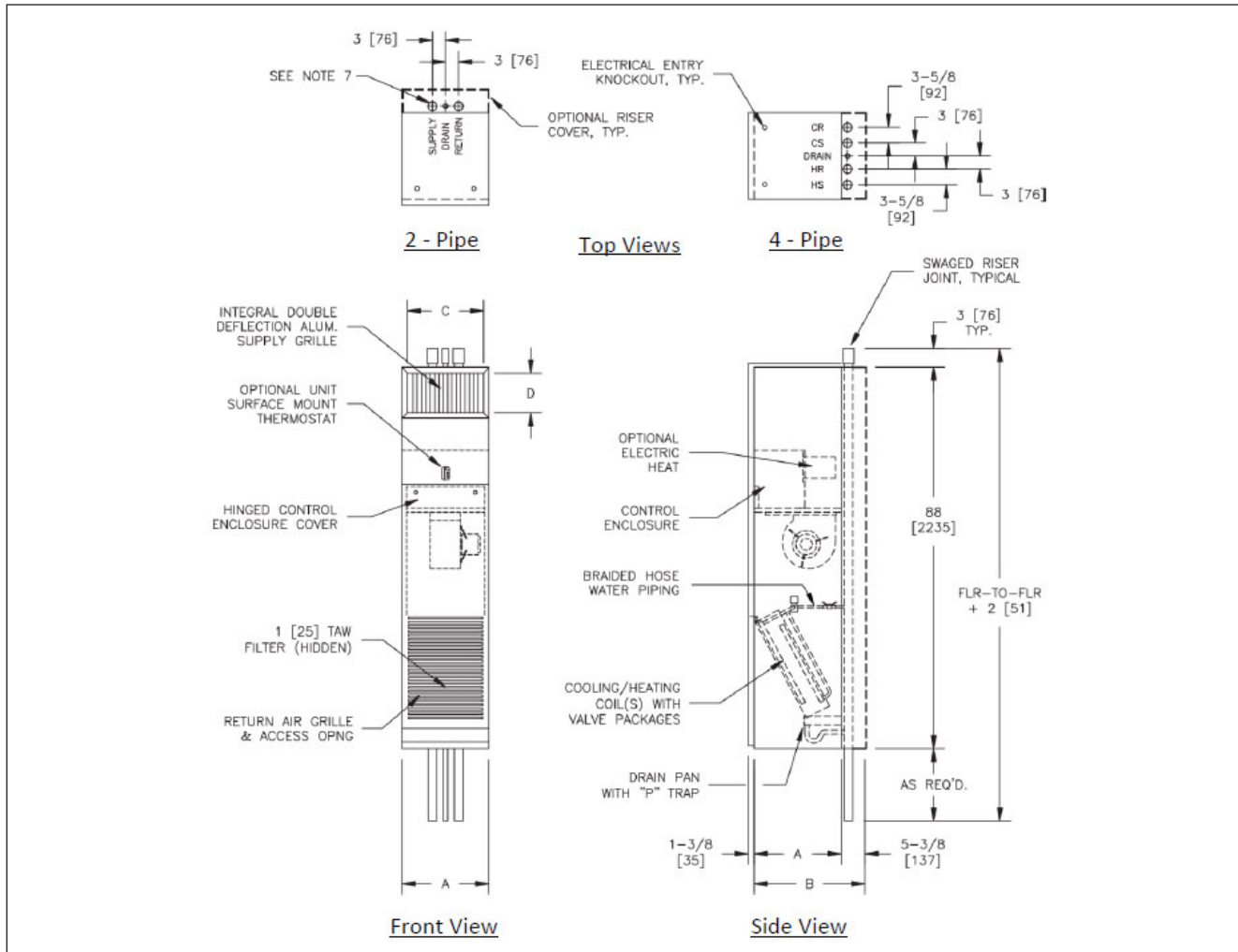


RAVE UNIT DIMENSIONS



Unit Size	A	B	C	D
03 & 04	18 [457]	16 1/2 [419]	16 [406]	8 [203]
06 & 08	20 [508]	18 1/2 [470]	18 [457]	12 [305]
10 & 12	24 [610]	22 1/2 [572]	22 [559]	14 [356]

Notes:

1. All dimensions are inches [mm]. Metric values are soft conversion.
2. All dimensions are  $\pm 1/4$  [6mm]
3. Thermostat is shipped loose and may be unit surface mounted or remote wall mounted.
4. Wiring from electrical entry point to control enclosure is furnished and installed by others in field
5. Risers available from 3/4" [19mm] to 3" [76mm] diameter with 1/2" [13mm] thick insulation, and 3/4" [19mm] to 2 1/2" [64mm] diameter with 3/4" [19mm] thick insulation
6. Riser length is 120" [3048mm] max., 100" [2540mm] min
7. All units are back riser, front single supply, Arrangement BF00 only
8. Factory mounted risers shown. Risers may also ship in advance of unit. See Ship In Advance Riser drawings for details.
9. Standard cabinet finish is British White
10. Floor and ceiling trim furnished and installed by others

All dimensions are in inches