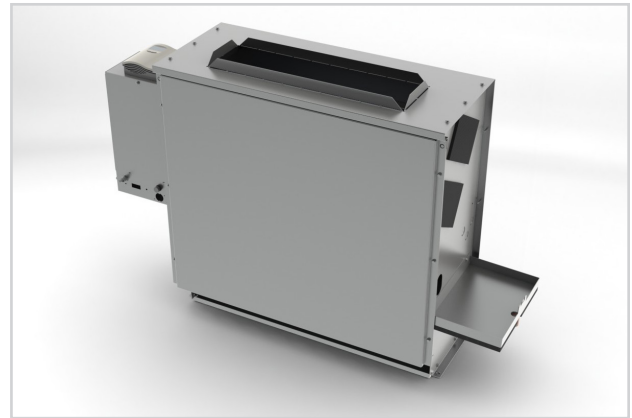


RBVR

- Performance AHRI Certified to Standard 440
- Sound Performance tested as per AHRI Standard 350-2000 (non-ducted equipment)
- ETL-Listed, Constructed in compliance with ANSI/UL 1995 Standard
- High-efficiency 3 speed and Variable speed EC motor available for higher energy efficiencies
- High-efficiency motor, SCR, DWDI blowers and Electric heat control available for quite operations
- Chilled Water, Hot Water and DX coils with factory mount or field install piping package available
- Top discharge air flange and decorative wall recessing panels available



RBVR

MODEL:

RBVR

OVERVIEW

Factory assembled, vertical blow-thru, ducted RBVR fan coils are designed for concealed installations inside a closet or furred-in under a window and ducted, for projects such as public buildings, hotels, schools, hospitals and general commercial applications.

OPTIONAL FEATURES INCLUDE:

Construction

All Units

- » Manual and motorized outside air dampers
- » Spare 1" throwaway filters
- » 1" pleated filters (MERV 8)
- » Wall boxes
- » Leveling legs

Concealed Units

- » Wall recessing panels

Coils

- » Automatic air vents
- » Stainless steel coil casings

Drain Pans

- » Stainless steel construction with external insulation
- » Double wall plastic auxiliary drain pan -- extended length
- » Stainless steel auxiliary drain pan -- extended length

Fan Assemblies

- » 208-230 & 277 volt, 60 Hz and 220 volt, 50 Hz motors


[See website for Specifications](#)

Electrical

- » SCR fan speed controller (High Speed Only)
- » Fan relay packages
- » Silent solid state fan relays
- » Toggle disconnect switch
- » Condensate overflow switch (auxiliary drain pan)
- » Main fusing
- » Unit and remote mounted three speed fan switches

Electric Heat

- » Door interlocking disconnect switches
- » Main fusing
- » Silent relay / contactors



Piping Packages

- » Factory-assembled - shipped loose for field installation
- » ½" and ¾", 2-way and 3-way, normally closed, two-position electric motorized valves
- » Isolation ball valves with memory stop
- » 4-pipe with 3-way valve
- » Fixed and adjustable-flow control devices
- » Unions and P/T ports
- » Modulating control valves
- » High-pressure, close-off actuators (½" = 50 PSIG; ¾" = 25 PSIG)

Thermostats

- » Analog, digital display, or programmable
- » Unit and remote mounted, with integral three-speed, fan switch
- » 2-pipe and 4-pipe control sequences
- » Automatic and manual changeover