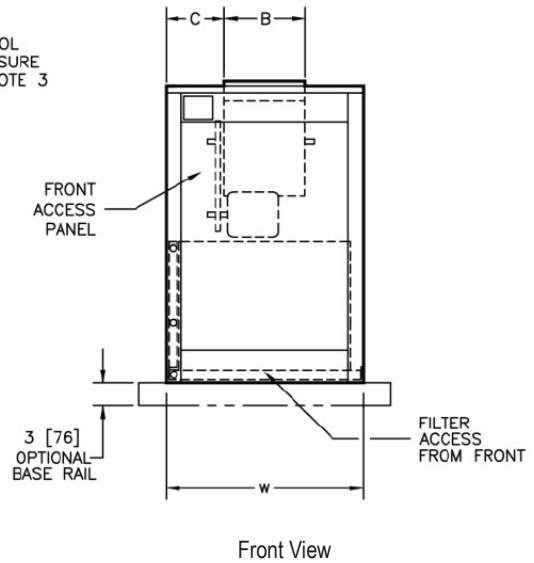
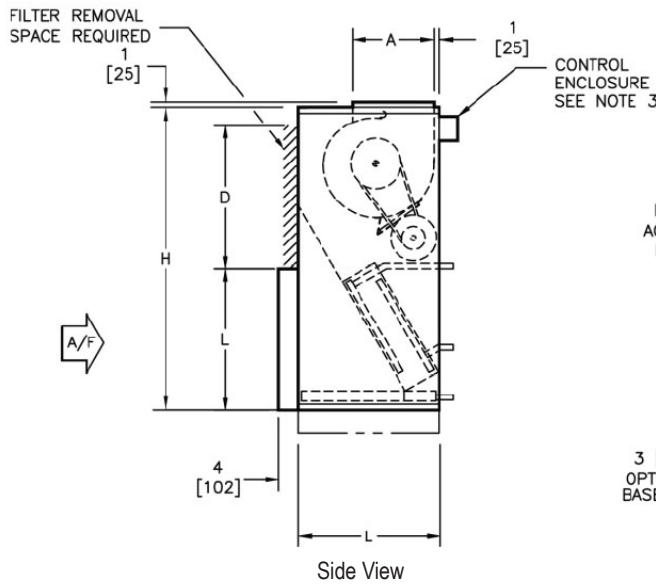
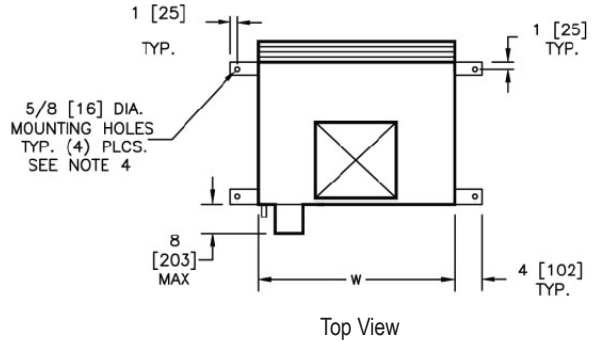


SBS UNIT DIMENSIONS / DISCHARGE ARRANGEMENT 2

Notes:

1. All dimensions are inches [millimeters] +/- 1/4" [6mm]. Metric values are soft conversions.
2. Motor/drive location may be specified Left or Right Hand. Standard control enclosure location matches motor/drive position.
3. Provide sufficient clearance to access electrical control and comply with all applicable codes and ordinances
4. Maximum total internal coil rows: 6
5. All drawings subject to change without prior notice
6. Left hand unit shown; right hand unit has CW and HW piping connections mirrored
7. Filter assembly runs the full length of the unit size
8. Drawings not for installation purposes



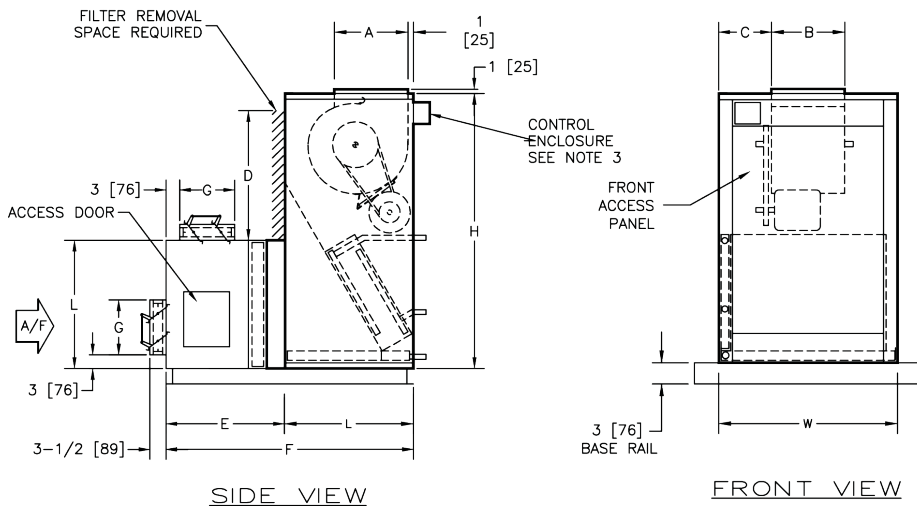
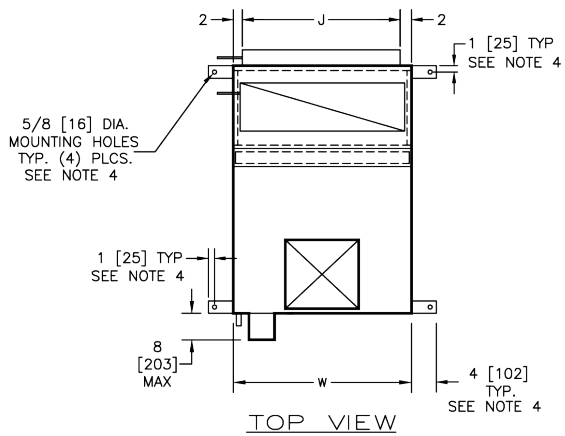
Dimensions									
Unit Size	Filter Size	Qty	H	W	L	A	B	C	D
08	16 x 20 x 2 [406 x 508 x 51]	1	46 [1168]	26 [660]	19 [483]	6 1/2 [165]	6 7/8 [175]	9 9/16 [243]	16 [406]
12	20 x 20 x 2 [508 x 508 x 51]	1	46 [1168]	26 [660]	21 [533]	7 1/2 [190]	8 1/4 [210]	8 7/8 [225]	20 [508]
16	24 x 24 x 2 [610 x 610 x 51]	1	54 [1372]	29 [737]	25 [635]	7 1/2 [190]	10 1/4 [260]	9 3/8 [238]	24 [610]
20	24 x 24 x 2 [610 x 610 x 51]	1	54 [1372]	29 [737]	28 [711]	11 3/8 [289]	13 1/4 [337]	7 7/8 [200]	24 [610]
25	24 x 24 x 2 [610 x 610 x 51]	1 Each	60 [1524]	39 [991]	28 [711]	16 [406]	12 7/8 [327]	13 1/16 [332]	24 [610]
30	12 x 24 x 2 [305 x 610 x 51]	1 Each	60 [1524]	39 [991]	28 [711]	16 [406]	15 [381]	12 [305]	24 [610]

All dimensions are in inches

SBS UNIT DIMENSIONS / INLET DAMPER SECTION / DISCHARGE ARRANGEMENT 2

Notes:

1. All dimensions are inches [millimeters] +/- 1/4" [6mm]. Metric values are soft conversions.
2. Left hand unit shown. Right hand unit opposite. Motor/drive location may be specified Left or Right Hand. Standard control enclosure location matches motor/drive position.
3. Provide sufficient clearance to access electrical controls and comply with all applicable codes and ordinances
4. Base rail designed for use with floor mount vibration isolators. See submittal for base rail details.



Dimensions									
Unit Size	Filter Size	Qty	H	W	L	A	B	C	D
08	16 x 20 x 2 [406 x 508 x 51]	1	46 [1168]	26 [660]	19 [483]	8 7/8 [226]	11 7/8 [302]	7 1/16 [180]	16 [406]
12	20 x 20 x 2 [508 x 508 x 51]	1	46 [1168]	26 [660]	21 [533]	8 7/8 [226]	11 7/8 [302]	7 1/16 [180]	20 [508]
16	24 x 24 x 2 [610 x 610 x 51]	1	54 [1372]	29 [737]	25 [635]	10 7/8 [277]	12 [305]	8 1/2 [216]	24 [610]
20	24 x 24 x 2 [610 x 610 x 51]	1	54 [1372]	29 [737]	28 [711]	13 7/8 [353]	14 [356]	7 1/2 [190]	24 [610]
25	24 x 24 x 2 [610 x 610 x 51]	1 Each	60 [1524]	39 [991]	28 [711]	13 7/8 [353]	16 5/8 [422]	11 1/16 [281]	24 [610]
30	12 x 24 x 2 [305 x 610 x 51]	1 Each	60 [1524]	39 [991]	28 [711]	15 5/8 [397]	16 5/8 [422]	11 1/16 [281]	24 [610]

All dimensions are in inches