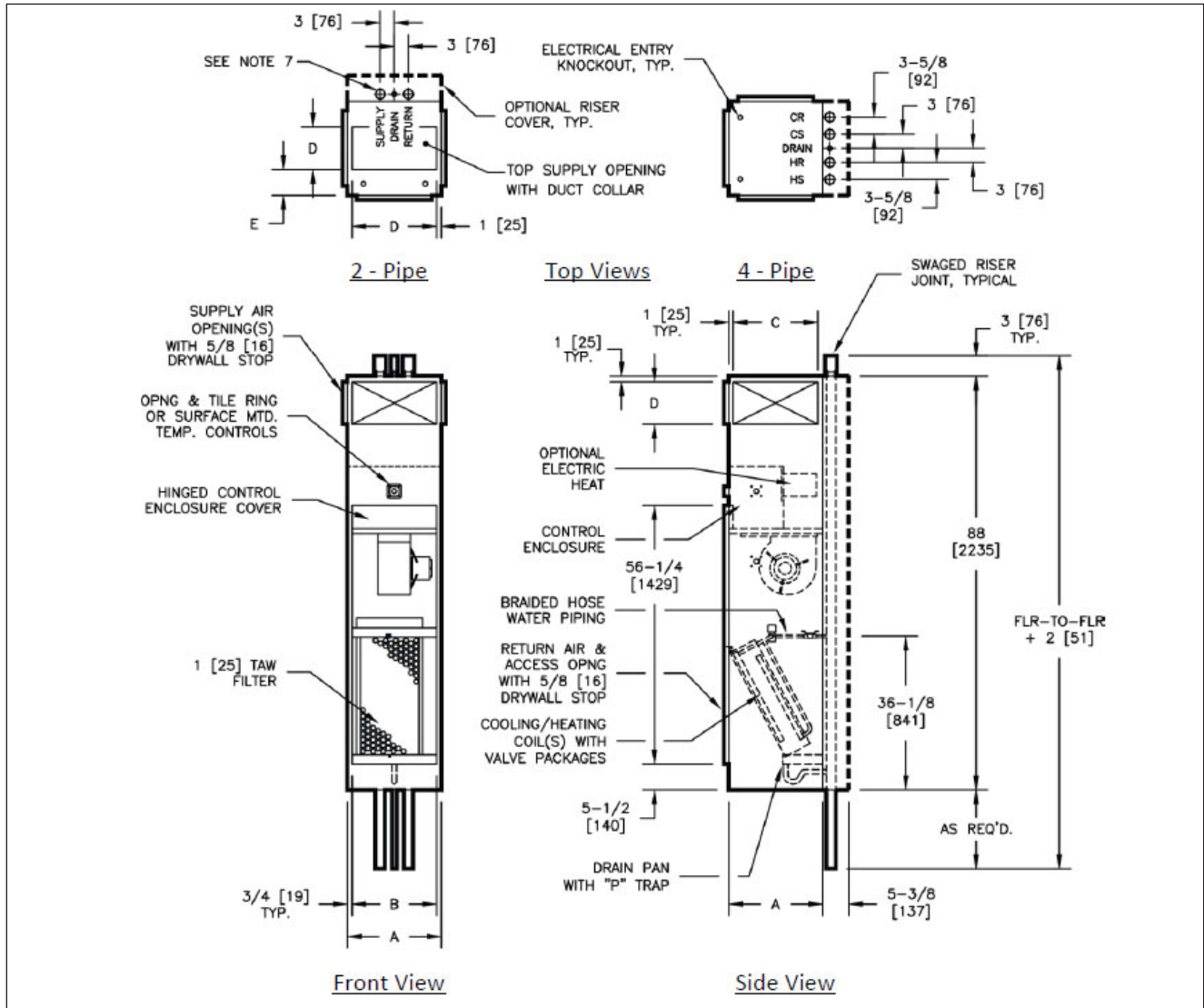


RAVS CONCEALED UNIT



Unit Size	Dimensions				E
	A	B	Single/Double Supply		
			C	D	
03 & 04	18 [457]	16 1/2 [419]	16 [406]	8 [203]	6 [152]
06 & 08	20 [508]	18 1/2 [470]	18 [457]	12 [305]	6 [152]
10 & 12	24 [610]	22 1/2 [572]	22 [559]	14 [356]	8 [203]

Notes:

1. All dimensions are inches [mm]. Metric values are soft conversion.
2. All dimensions are ± 1/4 [6mm]
3. Tile ring is installed on front of unit as shown, and may be moved to left or right side of unit in field
4. Wiring from electrical entry point to control enclosure is furnished and installed by other in field
5. Risers available from 3/4" [19mm] to 3" [76mm] diameter with 1/2" [13mm] thick insulation, and 3/4" [19mm] to 2 1/2" [64mm] diameter with 3/4" [19mm] thick insulation
6. Riser length is 120" [3048mm] max., 100" [2540mm] min.
7. Back riser location shown. See arrangement drawings for available unit configurations.
8. Factory mounted risers shown. Risers may also ship in advance of unit. See Ship In Advance Riser drawings for details.