

RARP Riser

- Type M or L copper with swaged connections
- ¾" to 3" diameters and 100" to 120" length available
- ½" and ¾" closed cell insulation
- Type M copper condensate/Drain Riser
- Riser extensions, caps and covers available
- Ship in advance risers



RARP RISER

MODEL:
RARP Riser

 See website for Specifications

OVERVIEW

Factory assembled or shipped loose risers are pressure tested before shipping. Ship loose riser offers flexibility in terms of installation and keeps the units away from the construction debris during riser testing and installation minimizing the damage.

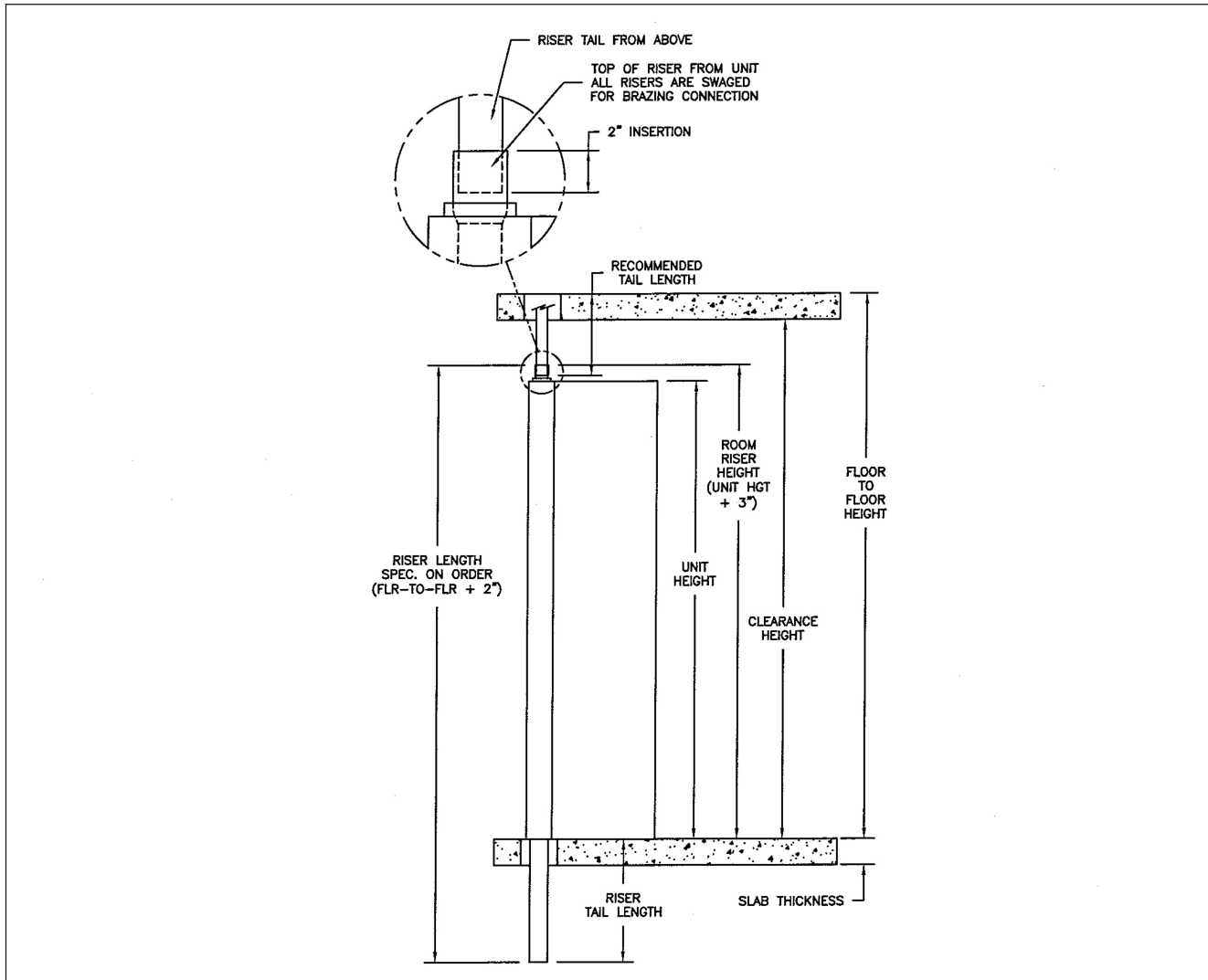
OPTIONAL FEATURES INCLUDE:

Risers

- » Type-M or Type-L copper with swaged connections
- » ¾" to 3" diameters
- » ½" and ¾" closed-cell insulation
- » Type-M copper condensate riser
- » Riser extensions
- » Riser cover
- » Ship in advance risers



RARP RISER UNIT TERMINOLOGY



Floor to Floor Height:

Distance from the top of one slab to the top of the slab on the next floor.

Clearance Height:

Height available on one floor, floor to floor height less than slab thickness

Room Riser Height:

Distance from the floor to the top of the riser, all risers extend 3" beyond the top of the unit

Unit Height:

Distance from the floor to the top of the unit

Riser Length:

Overall length of the risers (specified on order), use the formula below to determine riser length. Risers are available in lengths from 91" to 120" in 1" increments.

Slab Thickness:

Thickness of floor, including any hanging obstructions, see contractors plans to determine thickness.

Riser Tail Length:

Distance that risers extend below unit

Note:

1. If recommended riser length exceeds 120", riser extensions will be required