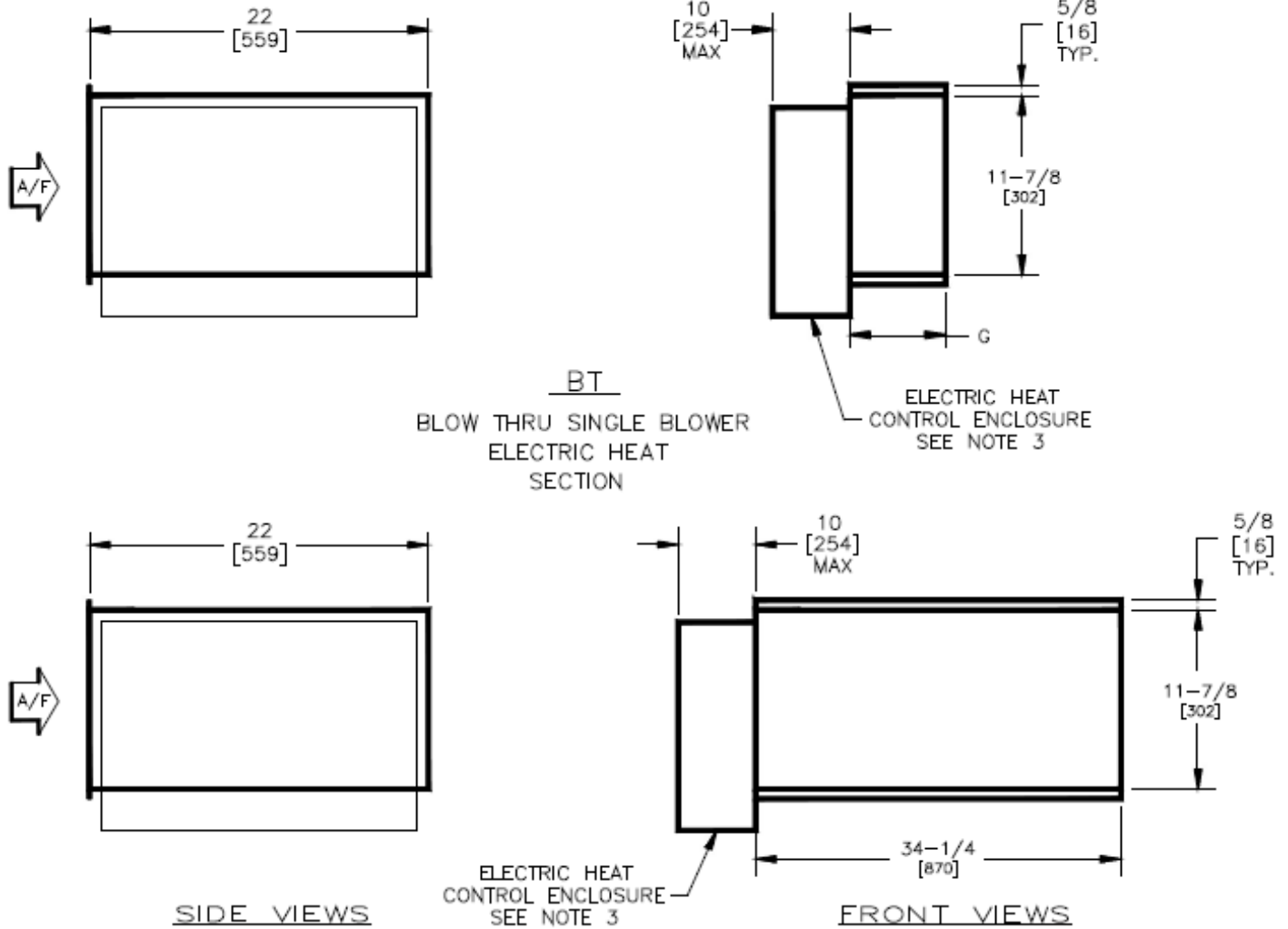


SBHD & SBVD Blow Thru Electric Heat

Model SBHD/SBVD Direct Drive Blower Coil Unit Blow-Thru Electric Heat



SIZES

UNIT SIZES	Weight lbs [KG.]		G
	SINGLE BLOWER	DUAL BLOWER	
08	45 [20]	-	8-3/4 [222]
12	45 [20]	-	8-3/4 [222]
16	45 [20]	-	10-3/4 [273]
20	45 [20]	-	10-3/4 [273]
30	45 [20]	100 [45]	10-3/4 [273]
40	45 [20]	140 [64]	10-3/4 [273]

NOTES:

1. All dimensions are Inches [millimeters]. All dimensions are $\pm 1/4"$ [6mm]. Metric Values are soft conversion.
2. Motor/drive location may be specified Left or Right Hand. Standard control enclosure location matches motor/drive position.
3. Provide sufficient clearance to permit access to controls and comply with applicable codes and ordinances.
4. Available for horizontal discharge only.
5. For units configured with an uninsulated blow-thru heat section: to prevent sweating, ensure that insulation is field-installed prior to cooling mode operation.

New	08/04/22	SP	New Release
Revision Date	Version Date	Initiated By	Description