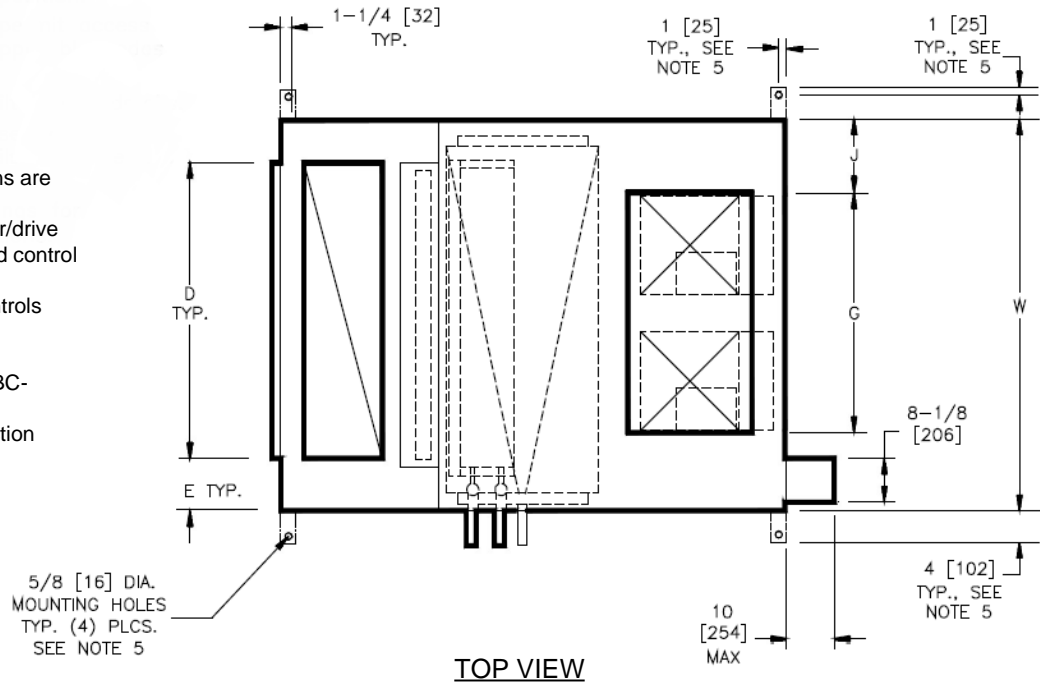


SBHD Dual Blower Arr. 1 w/Mixing Box

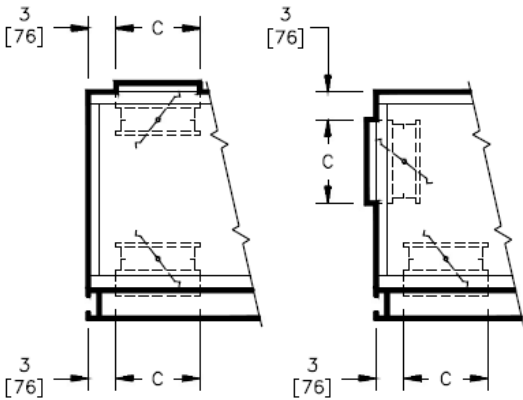
Model SBHD Dual Direct Drive Blower Coil Unit Discharge ARGT. 1
w/ Mixing Box

NOTES:

1. All dimensions are Inches [millimeters]. All dimensions are ±1/4" [6mm]. Metric Values are soft conversion.
2. Right hand unit shown, left hand unit opposite. Motor/drive location may be specified Left or Right Hand. Standard control enclosure location matches motor/drive position.
3. Provide sufficient clearance to permit access To controls and comply with applicable codes And ordinances.
4. See drawing BC-SBHD-16.0 for filter rack details.
5. Base rail is optional on the base unit. See Drawing BC-SBHD-18.0. Base rails must be used With mixing box.
6. See coil connection details drawings for Coil connection sizes and locations.

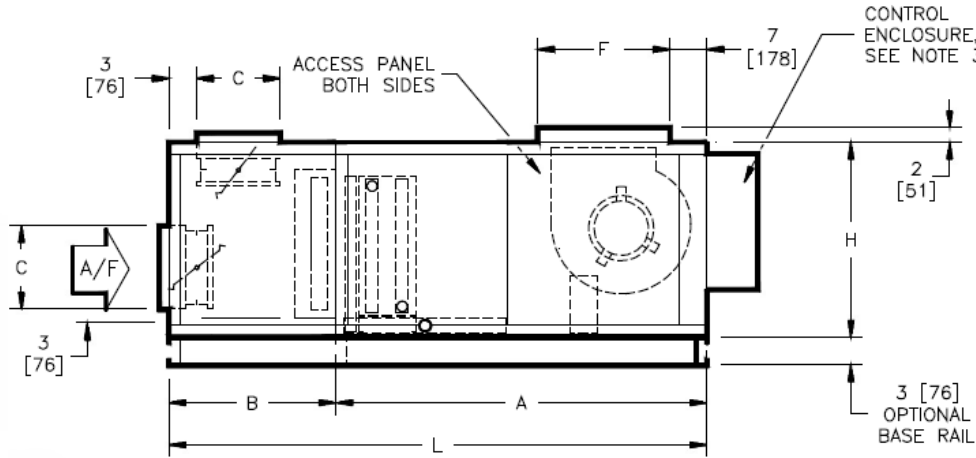


TOP VIEW



TOP/BTM INLET

REAR/BTM INLET



SIDE VIEW

REAR/TOP INLET

DIMENSIONS

SIZE	FAN SIZE	L	W	H	A	B	C	D	E	F	G	J
30	10 X 8 [254 X 203]	67 [1702]	59 [1499]	30 [762]	46 [1168]	21 [533]	12 [305]	45 [1143]	7 [178]	18 [457]	36-1/2 [927]	11-1/4 [286]
40	10 X 8 [254 X 203]	70 [1778]	68 [1727]	30 [762]	46 [1168]	24 [610]	15 [381]	48 [1219]	10 [254]	18 [457]	36-1/2 [927]	15-3/4 [400]

New	08/04/22	SP	New Release
Revision Date	Version Date	Initiated By	Description

All rights reserved. No part of this work may be reproduced or transmitted in any form or by any means, electronic or mechanical, including photocopying and recording, or by any information storage retrieval system without permission in writing from Superior Rex.