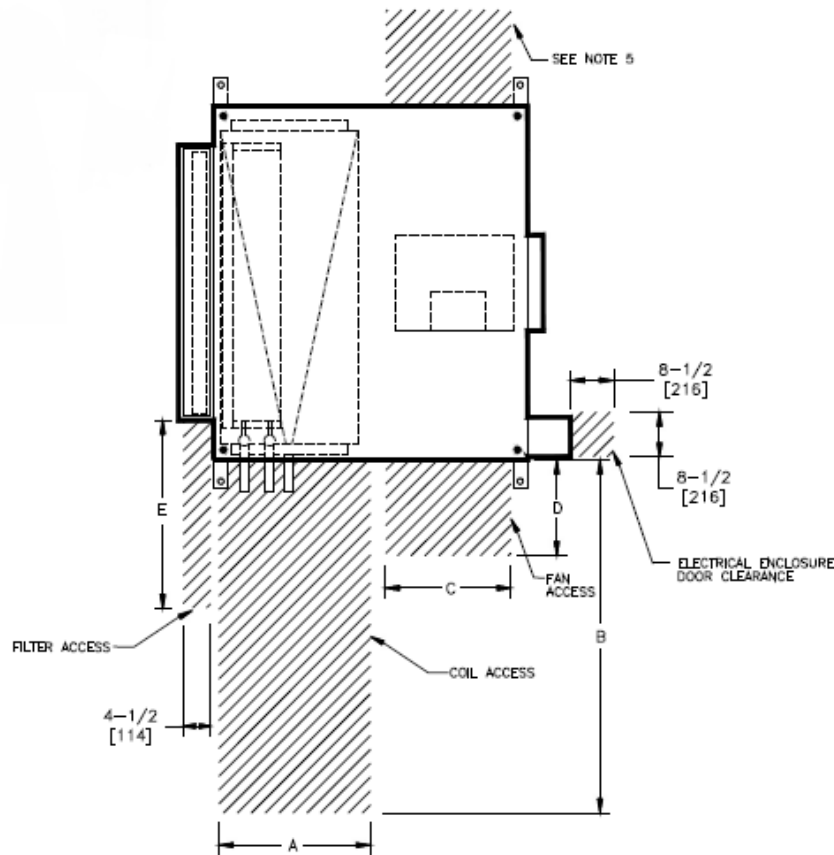
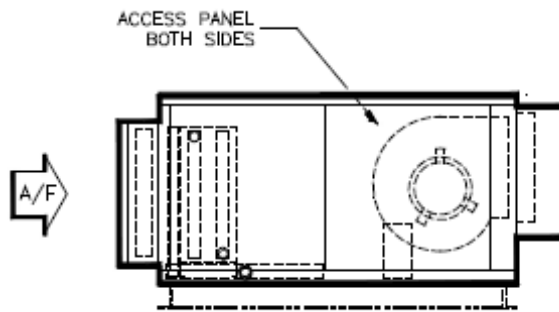


SBHD External Space Requirements

Model SBHD Direct Blower Coil Unit External Space Requirement



TOP VIEW



SIDE VIEW

DIMENSION

SIZE	A	B	C	D	E
8	18-3/4 [476]	30 [762]	17-3/4 [451]	17-3/4 [451]	20 [508]
12	18-3/4 [476]	36 [914]	17-3/4 [451]	17-3/4 [451]	25 [635]
16	18-3/4 [476]	44 [1118]	17-3/4 [451]	17-3/4 [451]	20 [508]
20	18-3/4 [476]	50 [1270]	17-3/4 [451]	17-3/4 [451]	20 [508]
30	27-3/4 [705]	59 [1499]	27-3/4 [705]	27-3/4 [705]	20 [508]
40	27-3/4 [705]	68 [1727]	27-3/4 [705]	27-3/4 [705]	20 [508]

NOTES:

- 1.All dimensions are Inches [millimeters].All dimensions are ±1/4" [6mm]. Metric values are soft conversion.
- 2.Right hand unit shown, left hand unit opposite. Motor/drive location may be specified Left or Right hand. Standard control enclosure location matches motor/drive position.
- 3.Provide sufficient clearance to permit access to controls and comply with applicable codes and ordinances.
- 4.Flat filter rack may be located at unit inlet as required. See drawing BC-SBHD-16.0 for rack filter details
- 5.Dual blower units require service access to both side access panels for motor/blower removal.

New	08/04/22	SP	New Release
Revision Date	Version Date	Initiated By	Description